

BAFTA Young Game Designers 2020

Finalist: MY ADVENTURE – Game Concept (10-14)

Both finalists aged 13 at time of competition, now aged 14. Entered via Aylesbury High School (Bucks).

The Pitch: My Adventure is a game inspired by nature designed to show young people the world and its inhabitants, including the negative effects human activity can have on the world.

Description: Once you open the game, you will be given a choice of which biome (sandy, ocean, snowy or jungle) you want to explore. You have an option of character outfits to choose from, specific to the biome. With your character you can change their outfit, hairstyle, gender and facial features. In each biome there will be levels you have to complete. During the levels, you will venture across that biome, unlocking different stories, information and animals found in that world. The animals may either be there to aid you or distract/prevent you from finishing the level. You will also be able to see the impacts human activity can have on these animals and ways in which you can help them. This may include things like deforestation (in the jungle biome) or global warming (in the snowy biome).

To help you during the game, you will have a backpack full of tools and equipment. This is where the element of problem solving comes in - you will have to decide which tool will best help you overcome a challenge. This may be building a fire to stay warm, or feeding a predator some food to prevent it attacking. Over the different levels you will have to collect keys, without the right amount of keys you will not be able to pass the level. Gems and coins are also up for grabs. You can use these to buy different tools, power ups and outfits in the game shop.

What does the game look like: Our game has a first person view, with realistic, good quality graphics. It has colourful landscapes and is set in many different locations (snowy, jungle, ocean and the desert). The person playing the game is the main character, who ventures across the landscapes, encountering different animals, and harsh settings/ weather conditions linked to the biome. The main character, the explorer, wears different outfits to suit the different biomes, although you can change the looks of the character. This may be different colour hair, eyes and skin tone.

The Different Biomes:

Jungle - The jungle biome is in a jungle. This biome has huge tall trees, long twisting rivers and interesting animals and wildlife you can explore. The challenges for this biome may include swinging on a vine to pass a river, climbing trees, or getting past predators such as snakes.

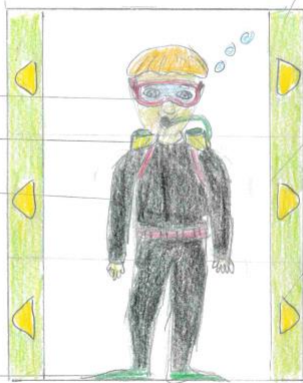
Snowy - This biome is set in a snowy landscape. It has huge mountains, lots of white snow and many glaciers and icebergs. In this biome the challenges may include making a fire to keep warm or crossing an icy river.

Desert - The desert biome is set in the tough terrain and sand dunes of a desert. In this biome you will encounter different animals such as eagles, scorpions and foxes. Challenges may include preventing dehydration, and dealing with predators such as scorpions.

Ocean - In the ocean biome, you will be magically transported to a place of wonder and natural beauty beneath the waves. In this biome you will encounter, coral reefs, treasure chests and many wonderful creatures. Challenges may include finding treasure, swimming through shark infested water or aiding unwell fish that have been affected by human activities such as fishing or littering.

Target audience: children/ young teenagers aged around 5-15. Our aims are to educate these children in the different environments in our world. They will learn about the impacts of pollution on the different biomes and animals. Education that's fun!

OCEAN



goggles

oxygen tanks


wetsuit

flippers

The arrows like these so you can change the character's features. You can change hair, eyes, nose, skin tone and hairstyle.

For this arrow you can change the colour of the wetsuit and the oxygen tanks.

For this section, you can change the colour of the flippers.




changes hairstyle, eye colour and other facial features

once you earn coins you can buy different colour wetsuits in the shop

change colour of bottom half of wetsuit and flippers


DESERT



change colour of head scarf, skin tone and facial features

in this section you can change the colour of the Ghamis.

you can change colour of shoes, and buy limited edition shoes in the shop.



change colour of head scarf, eyes, skin tone.

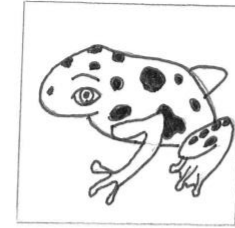
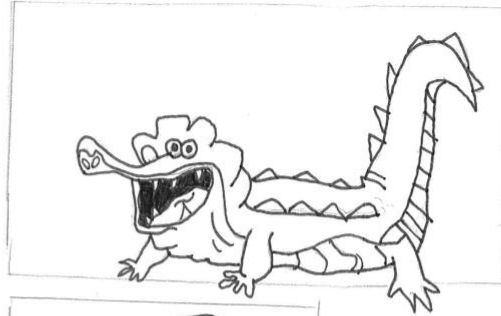
again, you can change the colour of Ghamis.

change colour of shoes.



Pier the French explorer

- options to change the colour of the character
- He is a jungle explorer
- Will have a green bag which you can fill with different tools and items.
- You can also change the appearance of your chosen characters
- When you earn a certain amount of money, you can buy new clothes and items from the item shop / stores.



- There are 6 characters for each biome
- There are three friendly - 3 non friendly
- friendly - Monkey, Koala, Parrot
- non friendly - Snake, crocodile, poisonous frog

How to escape each animal (non friendly)

Frog - attempts to shoot poison at you

↳ In your backpack will be a medicine

Snake - tries to bite you or does bite you

↳ use bandages and anti-snake venom

crocodile - Tries to bite you when fallen in water

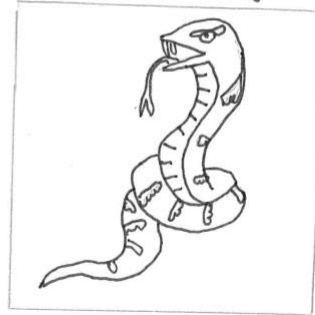
↳ Swim away - rope swing other items

How the friendly animals will help

koala - Help koala get back to safety, so it will help you and point you in the right direction / way to go.

Monkey - give the monkey a banana so it helps you, tame the monkey so it can be your side pet, which will help you

parrot - talk to it so it will talk back to you



Marie the French explorer

- options to change the colour of the character
- She is a jungle explorer
- Will have a green bag which you can fill with different tools & items
- You can also change the appearance of your chosen characters.
- You can earn enough money from different levels and prizes so you can get new outfits and new items from the item shop / stores.



Jungle

My Adventure

→ This is the background for the ocean biome

These are the characters for the snow biome. We have two main characts - female and male, you can change the features of the character if you want - before the game starts

Each biome also has animas, they can help you out when you get stuck. There is also evil animals in which you need to escape. You can escape them using the environment and you can use your backpack for help

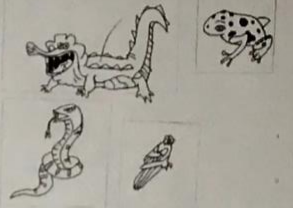


Again, this biome has 2 characters, male and female where you can customize to your preferences, like adding a hat, or a different coloured t-shirt / bases

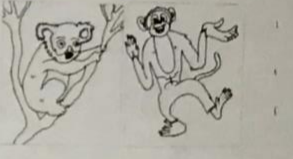
Just like the other biomes, this biome has a number of evil and good animals. They will help you through the game, guide you as well. Some parts of the environment will be difficult to pass, like bogs and lakes, you will either use your backpack with tools or the environment



Character design notes:
- Character design notes
- The character design notes
- The character design notes



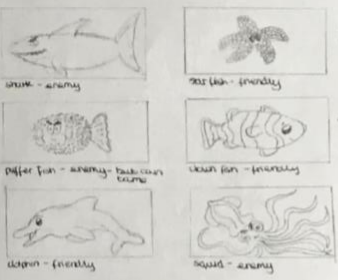
Character design notes:
- Character design notes
- The character design notes
- The character design notes



The biome is the same as the other biomes, just that it's the sea, it will be a fun and unique experience. again it will have some deadly and friendly animals, you can use your backpack or use the animals for help

You will travel the depths of the jungle, one after one. Although the animals seem very friendly, some are endangered and will need help from you, instead of you them. You might need to keep them as your side-kick until you reach the destination that you and they want. You will gain points by doing this.

OCEAN



This biome is probably one of the funnest biomes to play in. It will be hard challenging and difficult yet lots of fun. The environment will blow you away when you see it.

When you are being chased by a crocodile or being chased by a snake - you can swing on vines to get away or you can use the animals for help or look in your backpack for tools.

How to play: Logon to the game, then choose what biome and what level you will be playing. Then you must pack your backpack and choose your outfit for that level, to make sure your prepared. Start the level and make your way through, if you don't succeed the first time you can always try again to make sure you pass the level. And have fun

This game is aimed at people ages 5-12, it's probably not as fun for the older students.

You will enjoy this game a lot - as it will be hard and easy, and lots of fun

You will also be learning about each biome as you play

OCEAN



DESERT



This biome will be cold and stormy. Before beginning the level you will need to prepare by changing clothes and backpack. Tools and materials will also need to be changed due to weather

In this biome there will also be friendly and foe characters, you will once again use the materials and tools in your backpack to help you through that level.



DESERT



